

Fishing in mountain lakes

These are shallow and spectacular mountain lakes, beautifully located behind Skogshorn Mountain. The trout is large and the lakes are well suited for all types of angling.

Average trout weight is 400 – 900 g. Walking time: Hundsemvann, approx. 30 min., and Trollfjædne, approx. 90 min.

These lakes are on the way towards Lykja and have good stocks of mountain trout. Here are also perch, especially in Aftjern. Average trout weight is approx. 600 g.

NB. Possibility for renting boats.

Løkvadljern, Linjern and Hamarljern 8 9 7

These fish-rich lakes are located in forest, boggy and in open terrain. Exciting lakes both for fly-fishing and trolling. Average fish weight is 250 – 500 g. Walking time: Løkvadljern, approx. 10 min., Linjern, approx. 5 min., and Hamarljern, approx. 15 min.

Gravsetljern and Helgetjern 11 10

Small and spectacular bog lakes, easy accessible from the road towards Lykja. Here are trout and perch in both waters. Helgetjern is only for fly-fishing. Large fish are set out in these lakes! Average fish weight is 200-600 g.

Hornljern, Mellomljern and Grytingljern 12 13 14

Small lakes with lots of fish where you also can take fish under the minimum size limit. A fantastic alternative if you want to experience breathtaking scenery. The lakes flow out in the Hydne River, which plunges 200 metres down the mountainside forming Hemsedal's most beautiful waterfall, Hydnefossen. Average fish weight is 150 - 400 g. Walking time: Hornljern, approx. 60 min., Mellomljern, approx. 75 min., and Grytingljern, approx. 90 min.

Veikinjerna 17 18

Small, beautiful lakes magnificently located in the mountains of different sizes. Average fish weight is 250-750 g. Walking time: Approx. 90 min.

Eikredammen and Flatsjøen 15 16

Both lakes are a part of the Hemsila watercourse. Large fish are often taken from the wall of Eikredammen dam. A sinker with suspended fly works best. Average fish weight is 200 – 600 g.

River fishing

Hemsila 19

The fishing strain in Hemsila is great and a catch limit is therefore introduced.

Please read the rules on the opposite page closely!

The lower part of Hemsila runs slowly. The river is crystal clear and thus best suited for fly-fishing. The wild Hemsila trout is shy and difficult to dupe. Try to find jumping fish, and feel free to use a «Hemsedal's fly» on the end of your line. The upper part of Hemsila has alternating rapids, but quiet parts as well. Perfect for all types of angling. The largest fish are caught here. Average fish weight is 300 - 1200 g.

Grondeola 20

Here, the best fishing is from Flatsjøen and 2 km upwards. The river runs quietly, with less flow of water than Hemsila. The vegetation along the bank is dense, making fly-fishing very demanding. Grondeola offers good fishing, and many people are drawn here because of the great fishing strain in Hemsila. Average fish weight is 300 - 600 g.

Morkedøla, Bulliane and Grondeola (upper part) 22 21 20

These areas are best suited for angling with worms. Here is little flow of water, but fish weighing up to 2 kg have been set out. Average fish weight is approx. 250 g.

Photo: Bjorn Petersen. Coverphoto: Morten Minde.

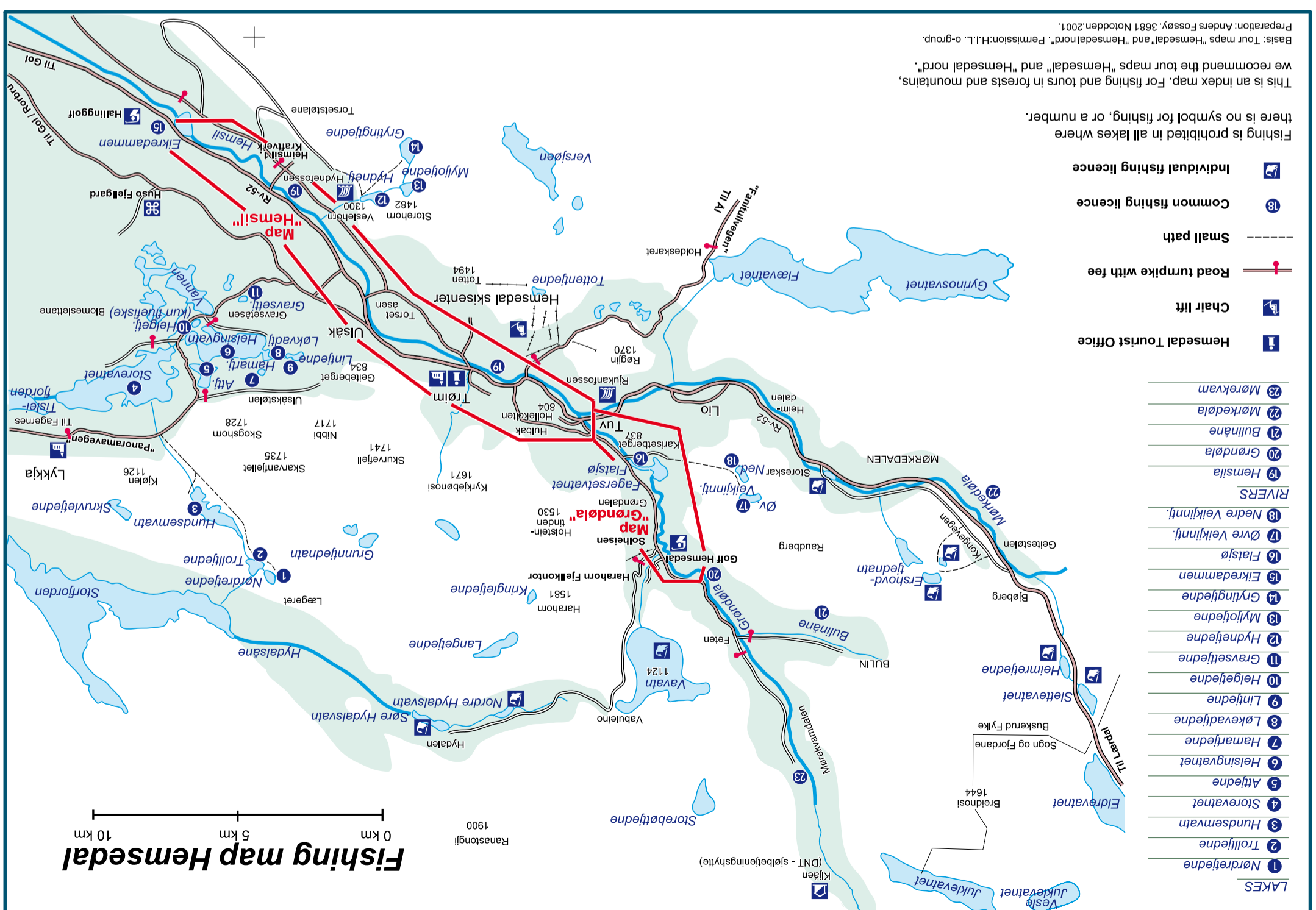


Angling in 4 rivers and 18 lakes



Hemsedal offers unique angling opportunities during the summer. The Hemsila and Grondeola rivers are two of Norway's best trout rivers.

www.fiskeihemsedal.no
www.hemsedal.com



- Hemsedal Tourist Office
- Chair lift
- Road turnpike with fee
- Small path
- Common fishing licence
- Individual fishing licence

- LAKEs**
- 1 Nordre fjædne
 - 2 Trollfjædne
 - 3 Hundsemvann
 - 4 Storevatnet
 - 5 Aftjedne
 - 6 Helsingvatnet
 - 7 Hamarljædne
 - 8 Løkvadljædne
 - 9 Linjedne
 - 10 Helgetjedne
 - 11 Gravsetjedne
 - 12 Hydnejedne
 - 13 Myllojedne
 - 14 Grytingjedne
 - 15 Eikredammen
 - 16 Flatsjø
 - 17 Øvre Veikinjern
 - 18 Nedre Veikinjern
- RIVERs**
- 19 Hemsila
 - 20 Grondeola
 - 21 Bulliane
 - 22 Morkedøla
 - 23 Mørkevann

This is an index map. For fishing and tours in forests and mountains, we recommend the tour maps "Hemsedal" and "Hemsedal nord".

Basis: Tour maps "Hemsedal" and "Hemsedal nord". Permission: H.L. o-group. Preparation: Anders Fossey, 3681 Notodden, 2001.

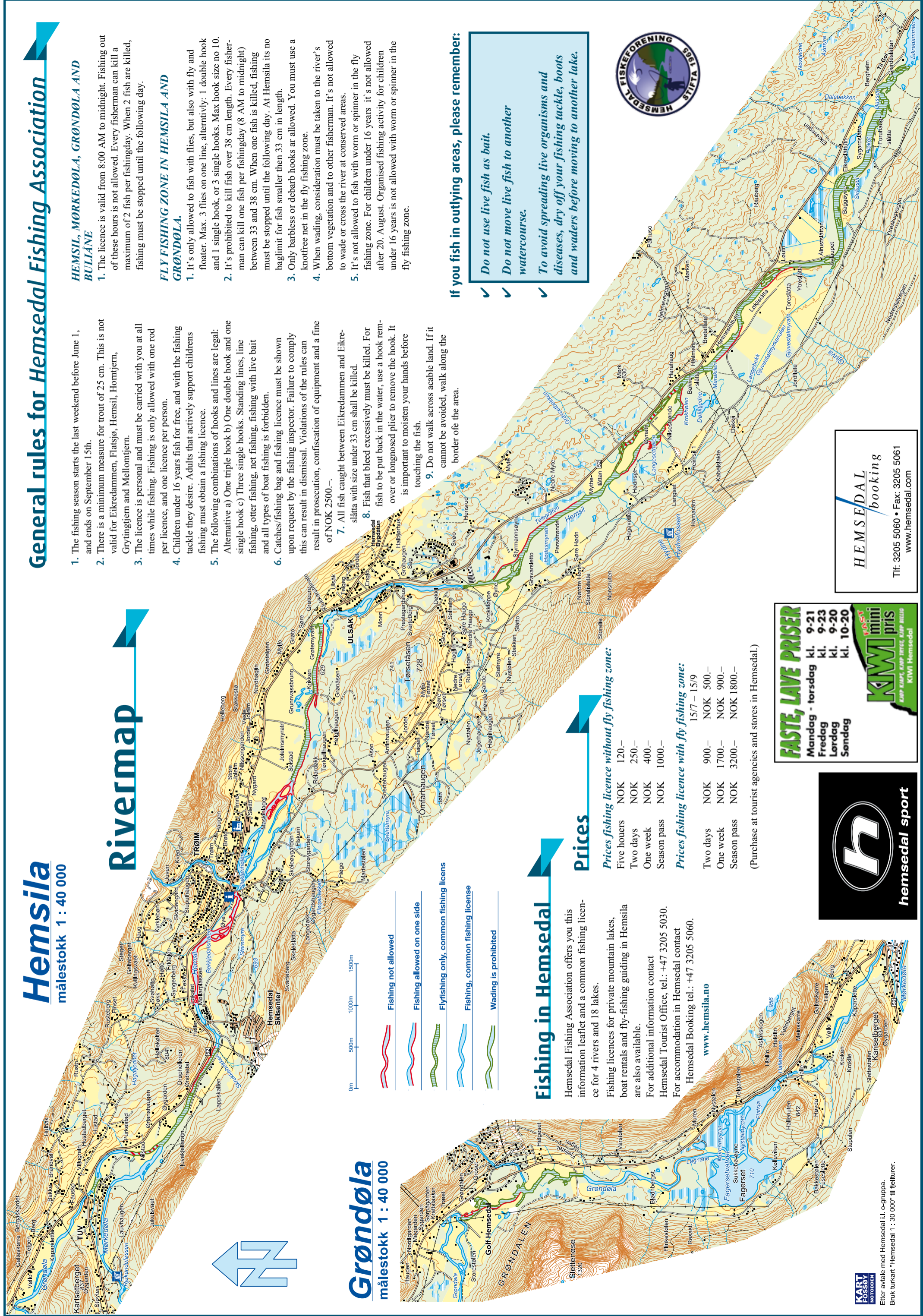
Fishing map Hemsedal

0 km 5 km 10 km

Hemsila

målestokk 1 : 40 000

Rivermap



General rules for Hemsedal Fishing Association

HEMSIL, MØRKEDØLA, GRØNDØLA AND BULLÅNE

1. The licence is valid from 8:00 AM to midnight. Fishing out of these hours is not allowed. Every fisherman can kill a maximum of 2 fish per fishing day. When 2 fish are killed, fishing must be stopped until the following day.

FLY FISHING ZONE IN HEMSILA AND GRØNDØLA.

1. It's only allowed to fish with flies, but also with fly and floater. Max. 3 flies on one line, alternatively: 1 double hook and 1 single hook, or 3 single hooks. Max hook size no 10.
2. It's prohibited to kill fish over 38 cm length. Every fisherman can kill one fish per fishing day (8 AM to midnight) between 33 and 38 cm. When one fish is killed, fishing must be stopped until the following day. At Hemsila its no baglimit for fish smaller than 33 cm in length.
3. Only barbless or debarb hooks are allowed. You must use a knotfree net in the fly fishing zone.
4. When wading, consideration must be taken to the river's bottom vegetation and to other fisherman. It's not allowed to wade or cross the river at conserved areas.
5. It's not allowed to fish with worm or spinner in the fly fishing zone. For children under 16 years it's not allowed after 20. August. Organised fishing activity for children under 16 years is not allowed with worm or spinner in the fly fishing zone.

if you fish in outlying areas, please remember:

- ✓ Do not use live fish as bait.
- ✓ Do not move live fish to another watercourse.
- ✓ To avoid spreading live organisms and diseases, dry off your fishing tackle, boots and waders before moving to another lake.



1. The fishing season starts the last weekend before June 1, and ends on September 15th.

2. There is a minimum measure for trout of 25 cm. This is not valid for Eikredammen, Flatsjø, Hemsil, Hornfjærn, Grytingfjærn and Mellomfjærn.

3. The licence is personal and must be carried with you at all times while fishing. Fishing is only allowed with one rod per licence, and one licence per person.

4. Children under 16 years fish for free, and with the fishing tackle they desire. Adults that actively support childrens fishing must obtain a fishing licence.

5. The following combinations of hooks and lines are legal: Alternative a) One triple hook b) One double hook and one single hook c) Three single hooks. Standing lines, line fishing, otter fishing, net fishing, fishing with live bait and all types of boat fishing is forbidden.

6. Catches/fishing bag and fishing licence must be shown upon request by the fishing inspector. Failure to comply this can result in dismissal. Violations of the rules can result in prosecution, confiscation of equipment and a fine of NOK 2500.-

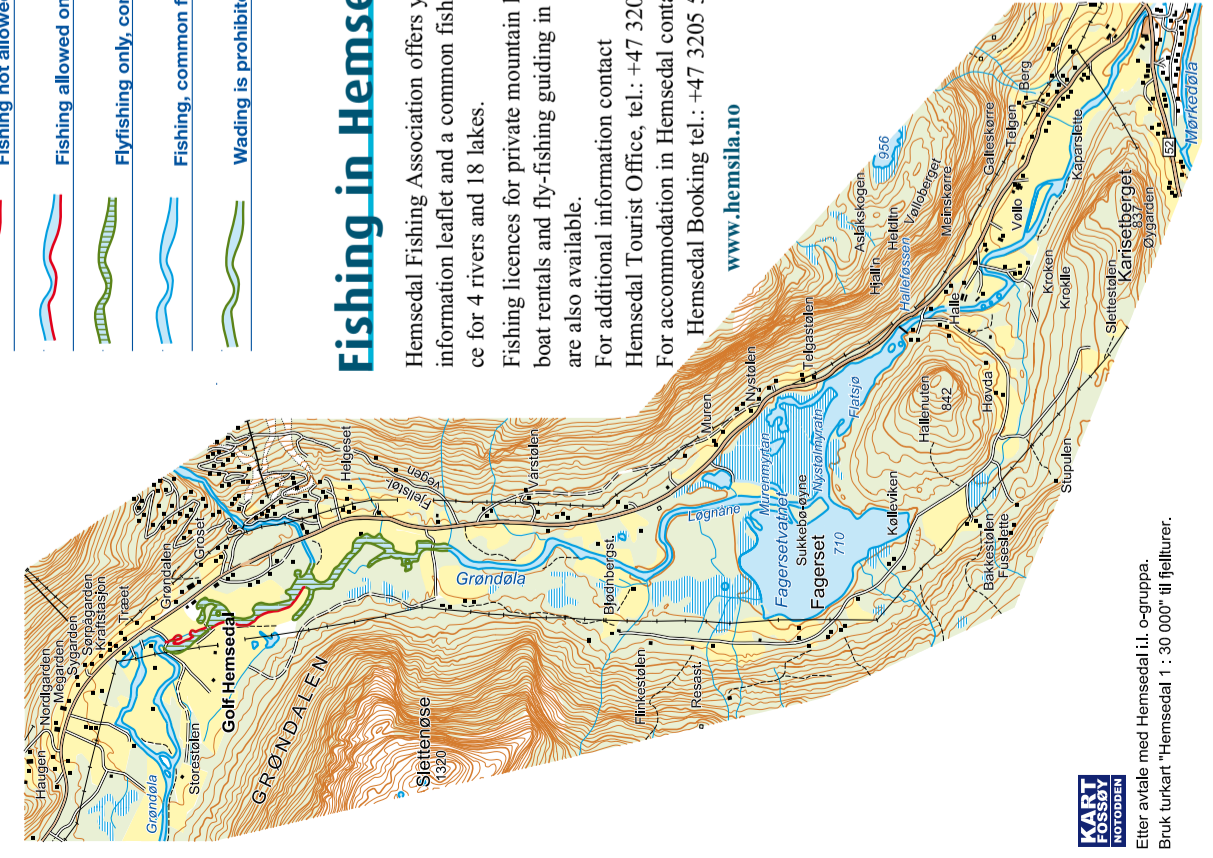
7. All fish caught between Eikredammen and Eikre-slåtta with size under 33 cm shall be killed.

8. Fish that bleed excessively must be killed. For fish to be put back in the water, use a hook remover or longnosed plier to remove the hook. It is important to moisten your hands before touching the fish.

9. Do not walk across acable land. If it cannot be avoided, walk along the border of the area.

Grøndøla

målestokk 1 : 40 000



Fishing in Hemsedal

Hemsedal Fishing Association offers you this information leaflet and a common fishing licence for 4 rivers and 18 lakes.

Fishing licences for private mountain lakes, boat rentals and fly-fishing guiding in Hemsila are also available.

For additional information contact Hemsedal Tourist Office, tel.: +47 3205 5030.

For accommodation in Hemsedal contact Hemsedal Booking tel.: +47 3205 5060.

www.hemsila.no

Prices

Prices fishing licence without fly fishing zone:

Five hours	NOK 120.-
Two days	NOK 250.-
One week	NOK 400.-
Season pass	NOK 1000.-

Prices fishing licence with fly fishing zone:

	15/7 - 15/9
Two days	NOK 900.-
One week	NOK 1700.-
Season pass	NOK 3200.-

(Purchase at tourist agencies and stores in Hemsedal.)

FASTE, LAVE PRISER

Mandag - torsdag kl. 9-21
 Fredag kl. 9-23
 Lørdag kl. 9-20
 Søndag kl. 10-20

KWIMINI pris

KWIMINI Hemsedal

hemsedal sport

HEMSEDAL booking

Tlf: 3205 5060 • Fax: 3205 5061
www.hemsedal.com

KARL FOSSEY METODEN
 Etter avtale med Hemsedal l.l. o-gruppa.
 Bruk turkart "Hemsedal 1 : 30 000" til fjellture.